

Vertilux Motorization Systems - 1" Horizontal Mini Blinds

TECHNICAL CATALOG FOR: MOTORIZATION (LIFT AND TILT)

6-100-LW-25B83



Motor- 24v DC- 30 r.p.m., 0.8 Nm torque

PACKING UNIT: 1 piece

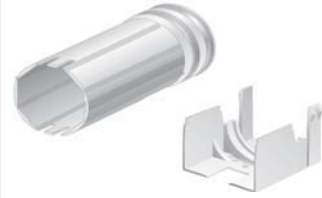
6-100-60-50000



Adjustable Mechanical Stop (Limit Switch)

PACKING UNIT: 1 piece

6-100-61-8039X



Cone kit for square rod in 25mm headrail take-up system
80393- Cone End
80394- Cone
80395- Cone Cover
80396- Cone Support

PACKING UNIT: 1 set

6-100-60-50401 & 0-160-CA-04500

N/A

Stop Collar Ring for 6mm (6-100-60-50401)
"O" Ring (0-160-CA-04500)

PACKING UNIT: 1 piece

6-100-60-50008



Headrail Adapter- 25 x 25mm

PACKING UNIT: 1 piece

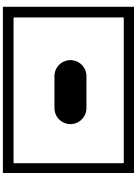
0-090-CA-21100



Braided Ladder Clip for attaching ladder to Cone Support

PACKING UNIT: 5000 pcs. per bag

6-100-63-00951



5 position D/C Rocker Switch (choose one control type)
(not required if motor is remote controlled with infrared or radio remote control.)

PACKING UNIT: 1 pcs per box.